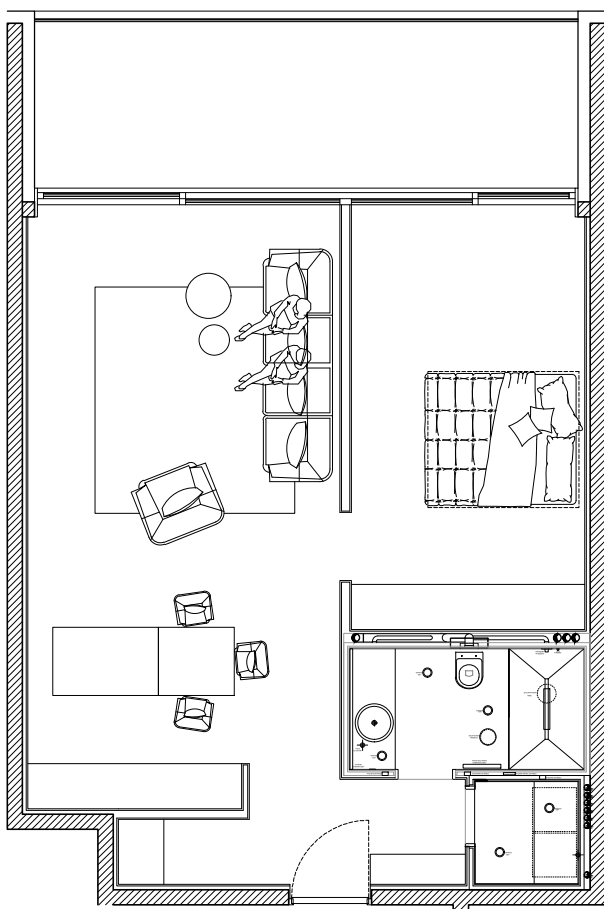


## stanovanje A12



**notranje površine** 61.5 m<sup>2</sup>  
**zunanje površine** 7.5 m<sup>2</sup>

predsoba 5.2 m<sup>2</sup>  
spalnica 17.3 m<sup>2</sup>  
utility 1.9 m<sup>2</sup>  
kopalnica 5 m<sup>2</sup>  
dn. - sp. prostor 32.1 m<sup>2</sup>  
terasa 15.6 m<sup>2</sup>